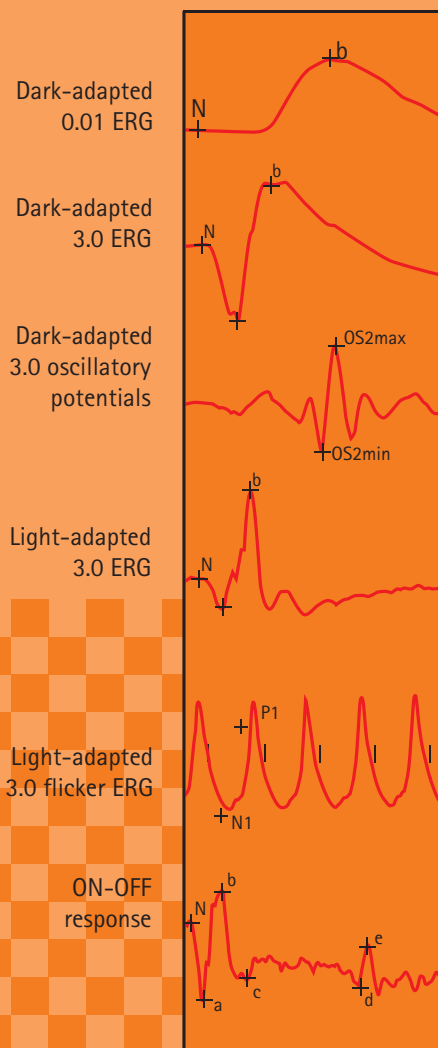


compact version

RETI-port/scan21

ALL IN ONE

ERG, VER, EOG diagnostic for macula,
retina, glaucoma and diabetic



Certification:
Quality Management System
EN ISO 9001:2000
EN ISO 13485:2003
TÜV Rheinland CE 0197

The RETI-compact features

- Delivered with standard ISCEV programs
- Bio signal and average result can displayed on the screen
- Automatic artefact rejection
- All amplifier data are software-controlled
- Automated impedance test can be started any time
- Easy graphical user interface with multiple independent windows
- Offline averaging of single response
- Multifocal analyze each signal with N1, P1 marker, 2D, 3D groups and user groups
- FFT - Fast Fourier Transformation to analyze steady state results
- DSP - Digital signal Processing Filter
- Database with backup on DVDRW
- Allow to analyze in local area network
- Compact interface technology in standard computers

Monitor Stimulator unit :

- High quality 19" monitor
- Pattern or strip position: full, half or quarter
- Computer calculated the check size by input the angel in deg and minutes
- Contrast controlled over the computer from 3% - 99%
- Pattern reversal, appearance/disappearance
- For work with children special fixation pictures during the test

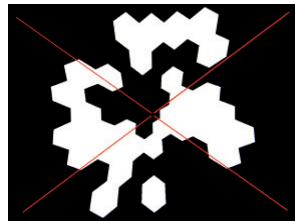
Ganzfeld Q450C :

- ISCEV Standard
- Full field globe 400mm
- All function full computer controlled, USB connection
- Flash and Backlight with white LED
- Intensity Standard white flash 3,0 cds/m² interval from -40dB to +5dB in steps of 5dB
- Background 25 cd/m², 100cd/m², 450cd/m²
- ON-OFF Response white Flash Time from 100ms-500ms in steps of 50ms
- Color Flash and Color Backlight with Blue-LED and Red-LED

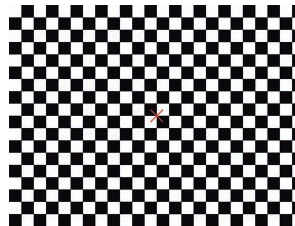
Amplifier :

- Bio signal amplifier 2 channel
- Type BF check-voltage 1,5 kV
- digital controlled amplifier
- Impedance 2 x 100 MOhm
- Noise <4µV(SS)
- Common mode reaction <110 dB
- Sensitivity 10µV/Div to 2 mV/Div
- High pass 0,02 Hz to 1 kHz
- Low pass 20 Hz to 10 kHz

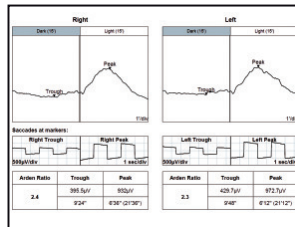
multifocal ERG



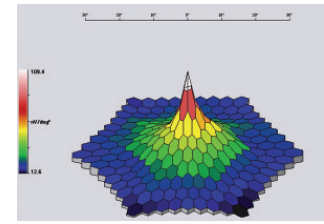
pattern stimulus ERG/VEP



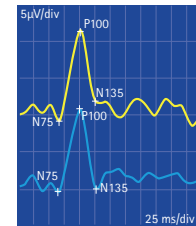
printout EOG normal eye



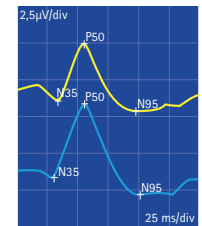
retina 3D plot normal eye



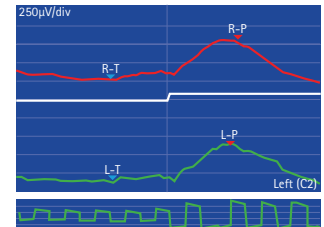
pattern VEP



pattern ERG



monitor screen



Examinations (ISCEV Standard):
 Pattern VEP + Pattern ERG + Flash VEP +
 Standard ERG + EOG + mfERG +
 Visual Acuity + Glaucoma Screening + ...

Distributor:



Electrophysiological diagnostic systems

ROLAND CONSULT
 Office Brandenburg
 Friedrich-Franz-Str.19
 D-14770 Brandenburg/Germany
 Phone: +49 (0) 33 81 - 38 26 20, Fax: -49 (0) 33 81 - 38 26 21
 www.roland-consult.de, e-mail: info@roland-consult.de