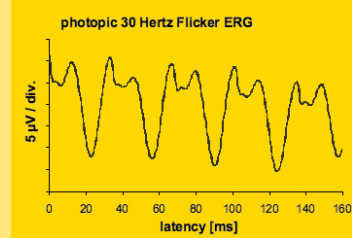
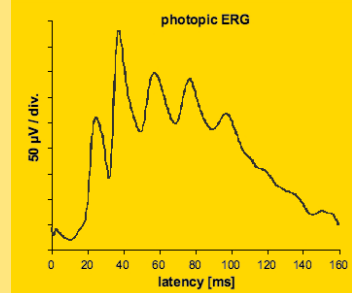
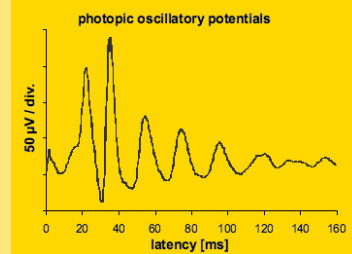
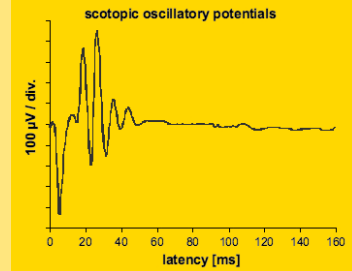
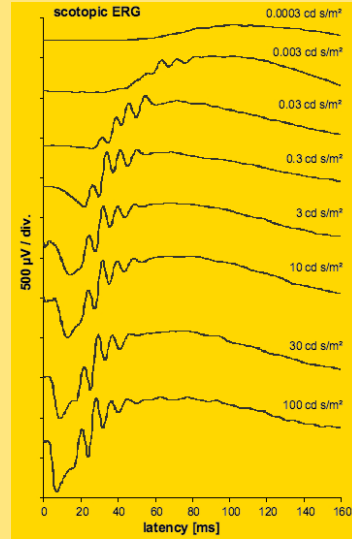
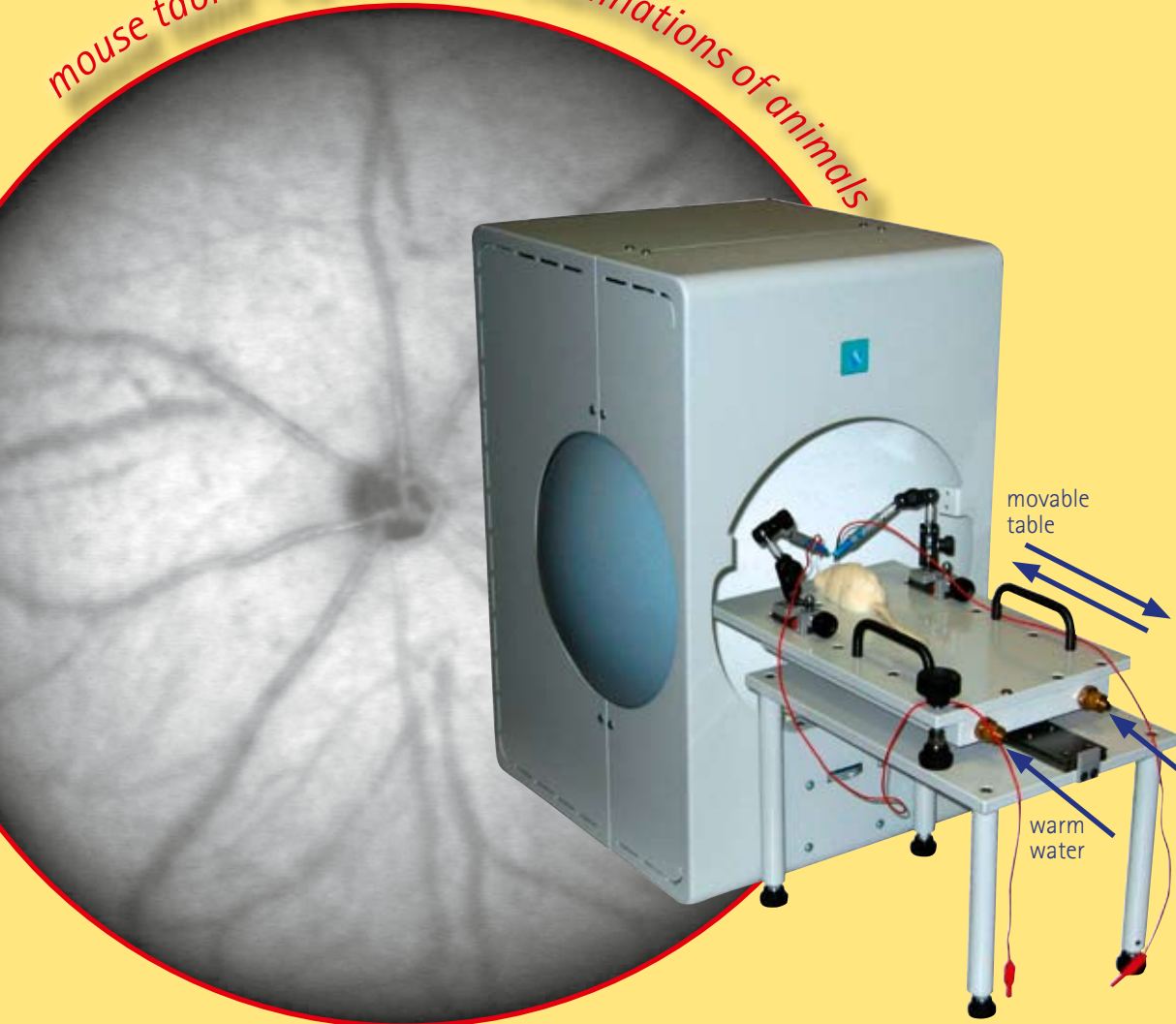


# RETI<sup>animal</sup><sup>®</sup>

RETI-port/scan21

Made in Germany

mouse table · especially for examinations of animals



Certification:  
 Quality Management System  
 EN ISO 9001  
 EN ISO 13485  
 TÜV Rheinland CE0197



application



infrared monitoring

# RETI<sup>animal</sup>®

## ISCEV Standard RETI-port/scan21

Made in Germany

*Especially for examinations of animals, ROLAND CONSULT provides their customers with some tools. The Mouse Table is a heatable examination table for small animals. It is placed in front of a ROLAND CONSULT Ganzfeld and has two free moveable electrode holders. After the animal and the electrodes are placed, the table can be slid into the Ganzfeld.*

### Ganzfeld Q450 SC (super color)

- LEDs for Flash and Backlight: white and 5 different colors royal blue: 455nm, blue: 470nm, green 525nm, amber 590nm and red 625nm LED's for advanced flash and backlight
- ISCEV standard and more
- Full field globe d=400mm
- All function full computer controlled, USB connection
- Flash and Backlight with white LED:  
Intensity Standard flash 3,0 cds/m<sup>2</sup>;  
interval from - 40dB to +5dB in steps of 5  
Background 25 cd/m<sup>2</sup>, 100cd/m<sup>2</sup>, 450cd/m<sup>2</sup>
- ON-OFF Response white Flash Time from 100ms-500ms in steps of 50ms
- Flash and Backlight with color LEDs  
Flash intensity from -45 dB to 0dB in steps of 5 dB  
Background 10 cd/m<sup>2</sup>, 15 cd/m<sup>2</sup>, 20cd/m<sup>2</sup>, 25cd/m<sup>2</sup>, 50cd/m<sup>2</sup>
- Option Xenon: Ganzfeld Q450 SCX  
Xenon tube for white High Flash (option)  
Intensity 10cds/m<sup>2</sup>, 30cds/m<sup>2</sup>, 100cds/m<sup>2</sup>
- Integrated infrared camera

### Animal table with thermostat:

- Mouse table: Size: 20 x 30 cm, other sizes are possible!  
Heating platform with warm water connection to keep the animal warm

### Operating unit:

- Intel Pentium Core-2-Duo CPU, 160GB HDD,1GB RAM
- DVDRW for database backup
- 19" TFT monitor
- Analog-digital-converter KPCI
- Color printer
- Keyboard, mouse
- Windows XP Professional
- Bio signal amplifier 4 channel
- Type BF check-voltage 1,5 kV
- Digital controlled amplifier
- Impedance 2 x 100 MOhm
- Noise <4µV(SS)
- Common mode reaction <110 dB
- Sensitivity 10µV/Div to 2 mV/Div
- High pass 0,02 Hz to 1 kHz
- Low pass 20 Hz to 10 kHz



*Electrophysiological diagnostic systems*

ROLAND CONSULT  
Office Brandenburg  
Friedrich-Franz-Str.19  
D-14770 Brandenburg/Germany  
Phone: +49 (0) 33 81 - 38 26 20, Fax: +49 (0) 33 81 - 38 26 21  
www.roland-consult.de, e-mail: info@roland-consult.de

### UV-LEDs optional

Wavelength: 360nm  
Flash intensity range up to 0,000005 mWs/m<sup>2</sup> up to 7,2 mWs/m<sup>2</sup>  
adjustable in steps of 0,000005 mWs/m<sup>2</sup>  
Up to 4,8 mWs/m<sup>2</sup> adjustable in steps of 0,000005 mWs/m<sup>2</sup> UV-  
Background light  
Range: Up to 480 mW/m<sup>2</sup> adjustable in steps of 1 mW/m<sup>2</sup>

### Option: RETI<sup>map</sup>® connected with RETI<sup>animal</sup>® system

#### Technical Data

#### Laser Scanning System:

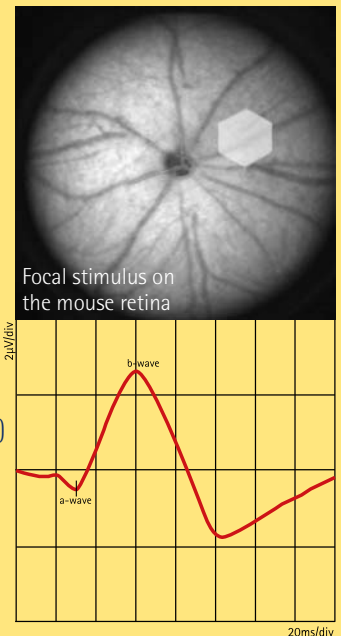
Field of view:  
30° x 30°  
Digital image size:  
512 x 512 Pixel  
Digital image depth:  
12 bit max. image frequency: 15 Hz  
Optical resolution: 23 µm

#### Laser Sources:

IR:  
883 nm (IR Image)  
Blue:  
488 nm (FA-Fluorescein Angiography)

#### Stimulation System:

(CRT-Monitor or LED source)  
Field of View: 30° x 30°  
Brightness: 500 cd/m<sup>2</sup>  
Vertical frequency: 60 Hz  
Resolution: 800 x 600 pixel



Distributor: